

# CHAMOT

## Recombinant Human CCL4

CM130-5HP  
CM130-20HP  
CM130-100HP  
CM130-500HP  
CM130-1000HP



CHAMOT

喬默生物技術(上海)有限公司  
CHAMOT BIOTECHNOLOGY CO., LTD.

# CONTENT

**1** 产品简介

**2** 产品组成

**3** 产品储存

**4** 产品使用

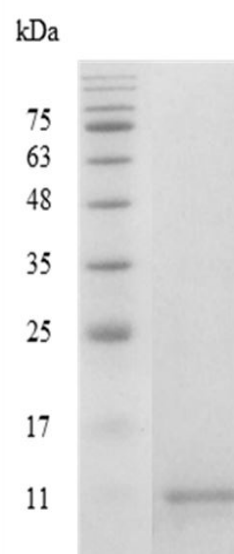
## Recombinant Human CCL4 (C-C motif chemokine ligand 4)

编号:	CM130-5HP CM130-20HP CM130-100HP CM130-500HP CM130-1000HP	规格:	5 µg 20 µg 100 µg 500 µg 1 mg
类别:	重组蛋白	应用:	Functional Assay

### 产品简介

**描述:** CCL4 act as an important pro-inflammatory cytokine during acute and chronic inflammatory responses. CCL4 also play a role as an attractant NK cells, dendritic cells, monocytes, and lymphocytes to sites of injury and inflammation. As CCL4 conducts signaling through G-protein-coupled receptor CCR5, which is a major co-receptor for M-tropic HIV strains. Thus, binding of CCL4 to CCR5 inhibits HIV entry and reduces the cell surface expression of CCR5. CCL4 has been identified as one of the major anti-HIV factors produced by CD8+ T cells.

**来源:** *Escherichia coli*  
**纯度:** >98% as determined by SDS-PAGE.  
**生物学活性:** Measure by its ability to chemoattract human THP1 cells using a concentration range of 10-100 ng/mL.  
**内毒素检测:** < 0.1 EU per 1 µg of the protein by the LAL method.  
**蛋白序列:** APMGSDPPTACCFSTARKLPHNFVVD  
 YYETSSLCSQPAVVVFQTKRGKQVCADP  
 SESWVQEYVYDLELN



SDS- PAGE analysis of recombinant human CCL4

## 产品组成

成分： 从含有 50 mM Tris and 150 mM NaCl, pH 8.5 溶液中冻干的蛋白质.

## 产品储存/运输

产品形式	储存温度	储存时间
冻干粉	-20°C至-80°C	自收到之日起1年
重悬液 (初始)	2°C至8°C	不超过1周
重悬液 (经稀释)	-20°C至-80°C	3到6个月

运输方式： 蓝冰

## 产品使用

- 1、开盖前，建议3000-3500rpm离心5min。
- 2、推荐使用无菌水重悬冻干粉，溶液浓度不低于100μg/mL，不高于1mg/mL，并室温静置至少20min以充分溶解。勿涡旋剧烈振荡。
- 3、重悬后的溶液，2-8°C无菌保存不超过1周。
- 4、如需长期保存，推荐使用无菌的含载体蛋白（如0.1%BSA、10%FBS或5%HSA）的溶液进一步稀释（不低于10ug/mL）后分装保存，-20°C至-80°C无菌保存3到6个月。无血清实验需求时，可更换为5%海藻糖溶液作为载体。避免反复冻融。

WB= Western Blot; IP= Immunoprecipitation; IF= Immunofluorescence; IHC= Immunohistochemistry;  
 FACS= Fluorescence activated Cell Sorting; FA= Functional Assay